

“ Things are changing on the Tiwis. To keep our country healthy and to keep our people healthy we’ve got to think about doing things in new ways.” — MR W. RIOLI, TIWI RANGER



TIWI ISLANDS

INDIGENOUS PROTECTED AREA

What is the Tiwi Indigenous Protected Area (IPA)?

The Tiwi IPA is about Tiwi people looking after their country and culture with financial support and recognition from the Australian Government. The IPA will cover the whole islands except for forestry plantations and township leases. It will be guided by Traditional Owners from all clan groups through an IPA Committee, managed by Rangers and administered by Tiwi Resources on behalf of the Tiwi Land Council.

Why is it good for Tiwi?

The Tiwi IPA will protect the Islands’ environment and cultural heritage. It will provide real jobs on country for Tiwi. It will help bring culture back into schools and provide an employment pathway for young people through a Junior Ranger program. As a Tiwi-owned project it will strengthen self-determination and empower Tiwi land and sea rights. It will bring secure funding and help ensure the future of the Tiwi Ranger program.

“ Tiwi people have always understood and cared for country – but now we need to use new knowledge because the world around us is changing.”

— MR W. RIOLI, TIWI RANGER

Planning for the IPA brought landowners together to think about the health and future of their country and culture. It has improved governance and collaboration between the Tiwi Land Council, Tiwi Resources, Tiwi Rangers, and landowners. It has highlighted to Tiwi people the important values that others recognise in their Islands.

“ Having this IPA will leave something for the future. We will have this IPA our whole lives, we can pass it on to the next generation. They will have it for their whole lives too. This is very good – good for country, good for culture, good for Tiwi! ”

— TIWI TRADITIONAL OWNER



Are there any tricks?

No! Having an IPA doesn't affect Tiwi Land Rights, or any other laws. It is simply an agreement between Tiwi and the Australian Government to keep country and culture healthy, for future Tiwi generations and for all Australians. It is like owning an Indigenous National Park that the government pays you to look after. And if it doesn't work out, you can pull out at any time.

What is the Plan of Management?

The Tiwi Islands IPA Plan of Management was developed through:

- consultations with all eight Tiwi clans over three years
- planning workshops with an IPA Planning Committee and Tiwi Rangers
- review of existing information about the Tiwi Islands

The Plan of Management is your story. It says what's special about Tiwi country and it talks about the problems and what to do about them. It will guide the Rangers' future work programs and drive development of other community-based programs on the Islands. The Plan has three parts:

Part A tells the story of Tiwi People, Country, and Culture.

Part B outlines what Tiwi people value most about their Islands, the issues that threaten them, and the ideas and strategies to reduce threats over time.

Part C is a mini plan for monitoring, evaluating, reporting and improving IPA work over time.

“We must listen to Country and what it needs from us.”

— TIWI TRADITIONAL OWNER

Who was involved?

Clan Group	Representatives
JiKiLaRUWU	Ms A. M. Munkara James Darren Puantulura Colin Kerinaia (Ranger)
MaNTiYUPWi	Tina Patlas Walter Kerinaia Cyril James Kerinaia Chris Long (Ranger)
WURANKUWU	Jacinta Tipungwuti Regina Kantilla Ron Poantimilui John Sebastian Pilakui (Ranger)
MaLAWU	Jane Puautjimi Richard Puruntatameri James Desantis (Ranger)
MUNUPI	Nikita Puruntatameri Richard Tungatalum Gerry Heron Mr W. Rioli (Ranger) Derek Puruntatameri (Ranger) Stanley Tipungwuti (Ranger) Clinton Rioli (Ranger) Warwick Puruntatameri (Ranger)
WULiRANKUWU	Wendy Miller Gerry Mungatopi Karen Tipiloura Adam Tipiloura (Ranger)
YiMPiNARI	John Wilson Marilyn Kerinaia Patrick Grant Cecil Black (Ranger)
MARRIKAWUYANGA	Pamela Brooks Adonis Wommatakimmi Mr S. Austral (Ranger) Ms M. Austral (Ranger) Brian Austral (Ranger)

“Our young people need training to become rangers. We need a Junior Ranger program, so young ones can become rangers when they leave school.”

— TIWI RANGER

“We need to reconnect back to country, its healing being out on country, healing for everyone.”

— TIWI TRADITIONAL OWNER



Traditional Owners identified Tiwi Values, Goals and Threats during IPA Planning Workshops

Tiwi IPA Values

Tiwi Goals

TIWI PEOPLE AND CULTURE	Strong men and women and families maintaining and strengthening Tiwi culture, caring for country, respecting Elders, raising strong kids that know their country, language, totems, stories, dreamings, sacred sites and ceremony
CULTURAL PLACES	Tiwi cultural places – sacred sites, spiritual places, hunting and camping areas, historic sites, and homelands – are intact, alive, protected, and cared for
TIWI COUNTRY	Country is respected, hunting and fishing is good, it's easy to access important food gathering places and there are no feral animals or weeds
PLANTS AND ANIMALS	All Tiwi plants and animals are healthy, protected, and abundant, especially the plants and animals we use for food and culture
BUSH TUCKER AND MEDICINES	Knowledge and use of Tiwi foods and medicines from land and sea is strong and being passed on
RANGERS AND IPA	A Tiwi IPA with strong and committed men, women and Junior Rangers keeping land and sea country healthy and culture alive into the future

Threats to the Tiwi Values



FERAL ANIMALS
BUFFALO, PIGS
AND HORSES



LOSS OF CULTURE



**INTRODUCED
PESTS – CATS, ANTS
AND CANE TOADS**



**COUNTRY LONELY
AND NOT HEALTHY**



WEEDS



RANGER CAPACITY



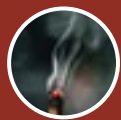
CLIMATE CHANGE



**LOW RESPECT
FOR TIWI COUNTRY
AND CLANS**



SEA RUBBISH



**MODERN TECHNOLOGY,
GAMBLING AND GUNJA**



**WILDFIRE
FIRE NOT MANAGED
PROPERLY**



TRESPASS

“Big mob of those buffalo and horses. Get rid of them. They're not good for country.”

— TIWI TRADITIONAL OWNER

“Feral cats killing them, killing those animals.”

— TIWI TRADITIONAL OWNER

“Kids are too busy on their phones, they're losing culture. They need time on country, they need culture camps so they can learn more about culture and ceremony.”

— TIWI TRADITIONAL OWNER

“Nobody is going out on their country anymore. Country is lonely, country needs people.”

— TIWI TRADITIONAL OWNER



What happens next?

- The Tiwi Islands IPA Plan of Management is expected to be reviewed and signed off by the eight Tiwi clan groups and the Tiwi Land Council by June 2025
- The development of the IPA Plan by Traditional Owners and achievements to-date will be celebrated at the Tiwi Cultural Festival in July 2025. Dedication of the IPA is expected to be by the end of 2025

“We are yesterday people; our kids, they are tomorrow people.”

— TIWI TRADITIONAL OWNER

“Need to maintain our language, our culture, got to do it together. Make it stronger for our kids, our future generations.”

— TIWI TRADITIONAL OWNER



Further information

Tiwi Ranger Program & IPA Manager
E: admin@tiwiresources.com.au

