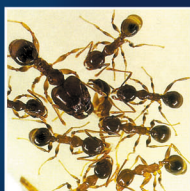


Cane Toad



Yellow Crazy Ant



Bigheaded Ants



Giant African Snail



Fruit Fly



Rabies



Fringed Spider Plant



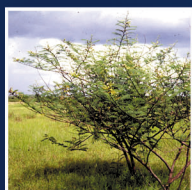
Fringed Spider Plant



Lantana



Mission Grass



Mimosa Pigra



Gamba Grass



For further information please contact:

Tiwi Land Council

PO Box 38545

WINNELLIE NT 0821

Ph: 08 8970 9373 Fax: 08 8978 3698

nrm@tiwilandcouncil.com

www.tiwilandcouncil.com

TIWI ISLANDS QUARANTINE



All vehicles, equipment and luggage travelling to the Tiwi Islands must be free of soil, plant material, seed and/or unwanted pests such as ants, other insects and cane toads.

All freight and luggage must be cleaned and inspected prior to departure.



Tiwi Land Council

WHY IS QUARANTINE IMPORTANT?

The natural resources of the Tiwi Islands are our most valuable asset. They not only form the basis of our traditional activities, but also underpin our economic aspirations.

The introduction of feral animals, weeds and other pests and diseases will place the flora and fauna of the Tiwi Islands at great risk.

Feral animals such as cane toads and big-headed ants have been shown elsewhere to kill and displace native animals. Their introduction to the Tiwi Islands will have an immediate and devastating effect.

Weeds displace native vegetation, and can cause extremely hot fires. It is vital that weeds such as mission grass and gamba grass do not proliferate in the Tiwi Islands, given that traditional burning regimes are an important tool in Tiwi land management.

Our emerging forestry, tourism and fishing enterprises are vulnerable to attack from pests and diseases. A single incursion could destroy our hopes for an independent economy.



HOW DO PESTS TRAVEL?

There are many ways that pest species can be transported to the Tiwi Islands. Some of the common ones are:

Clothing:

- Weed seeds on clothes.
- Soil and fungus on boots and shoes.

Luggage:

- Ants in cases, boxes or food.
- Soil, weeds and weed seeds in cases or boxes.
- Water in containers that may contain toad eggs or tadpoles.
- Fish tanks/bowls that may contain water weeds and diseases.
- Ants, eggs, tadpoles and fungus in pot plants.

Freight:

- Parasites on dog and cat crates, or on domestic animals.
- Soil and trash in vehicles and machinery.
- Water in freight and machinery that may contain toad eggs and tadpoles.
- Soil and trash in and on containers.
- Weed seeds in construction materials such as sand, gravel and rock.

HOW CAN YOU HELP?

DO NOT take plants and animals to the Tiwi Islands unless authorised to do so by the Tiwi Land Council.

Before you travel, check your clothes for seeds and soil, especially if you have recently been in an area where weeds occur.

Check and thoroughly clean any freight you are sending to the Tiwi Islands.

Be especially vigilant for areas of ponded water, or hollow and hidden sections in your gear.

Do not leave freight sitting around in areas where ponded water, weeds or introduced animals are present.

Pot plants are a common way of spreading ants, cane toads and soil borne diseases. If you are taking plants to the Tiwi Islands, make sure they come from a certified clean nursery. Please DO NOT bring back-yard plants to the Tiwi Islands.

Quarantine checklists for plant and equipment are available from the Tiwi Land Council.



Tiwi Land Council